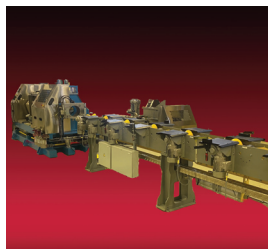


MultiCollector II SQL: A Data Storage Solution

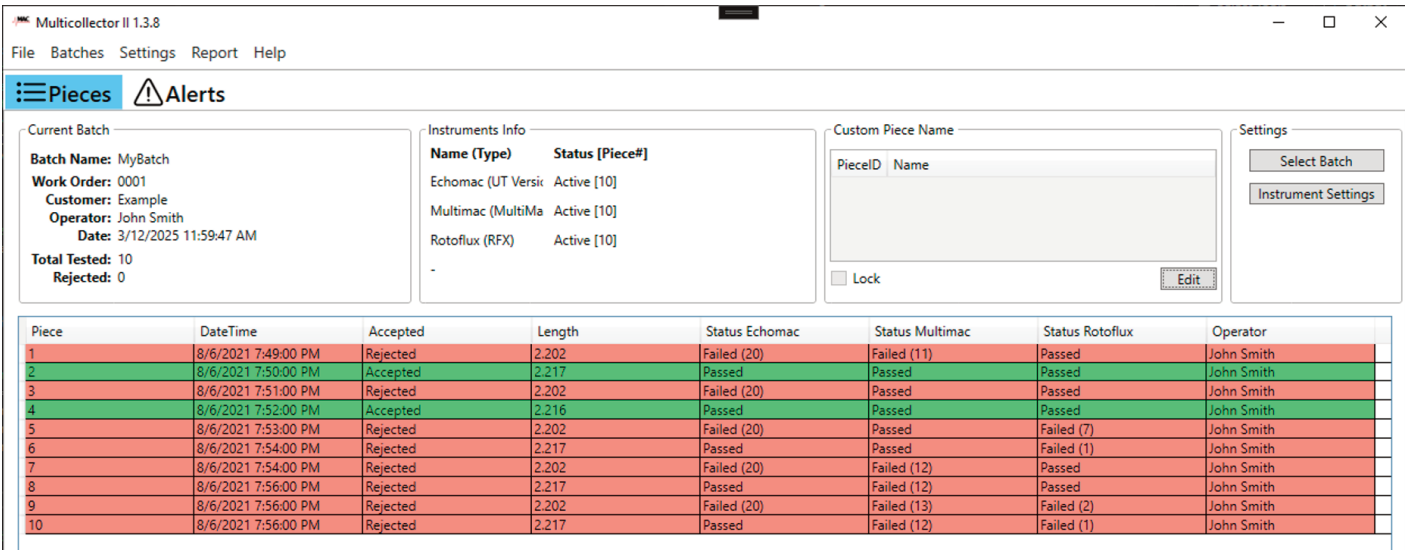


- Automate data collection
- Multi-instrument syncing
- Network-wide accessibility
- Unique product traceability

Solving the Challenge of Test Data Management

The MultiCollector II SQL Storage Solution from MAC® is designed to simplify data management in complex manufacturing environments. Whether you're using a single instrument or an integrated multi-instrument setup, MultiCollector efficiently stores, tracks, and retrieves test data, providing the flexibility and scalability needed for high-volume production lines.


MultiCollector II enables users to streamline quality control by automatically collecting and organizing test results into an open SQL database. With the ability to search and retrieve specific data from past tests, it helps reduce time spent on manual tracking and reporting, making quality assurance faster and more accurate.



Main window of MultiCollector showing three instruments connected and piece names populated.

Seamless Integration Across Mutiple Instruments

MultiCollector II supports integration across a variety of MAC® instruments including Echomac®, Rotoflux® AC, Varimac®, Production Comparator VI, and MultiMac®, enabling cohesive data collection in a multi-instrument setup. This allows operators to view all test results in one centralized location for improved analysis and decision-making.


 Magnetic Analysis Corporation		
Customer:	Lot #:	Date & Time: Apr 3, 2025 2:34 PM
S.O. Number:	Heat #:	Speed: 19.95
Specification:	Batch #: Batch234	RPM: 2023
Size:	Pipe #:	Method:
Ref. Standard:	Operator Name:	

AUTOMATIC FULLBODY ULTRASONIC TESTING TALLY REPORT		
Piece	Length	Status
1	9.84	Rejected
2	9.84	Rejected
3	9.84	Rejected
4	13.94	Rejected
5	14	Rejected
6	12.5	Rejected
7	12.78	Rejected
8	14.12	Rejected
9	12.32	Rejected
10	14.02	Rejected
11	13.9	Rejected
12	12.47	Rejected
13	14.02	Rejected
14	13.85	Rejected
15	12.3	Accepted
16	14	Rejected
17	12.84	Accepted
18	12.48	Rejected
19	14.05	Rejected

MAC® Report Templates are preloaded into the software.

Efficient and Reliable Data Tracking

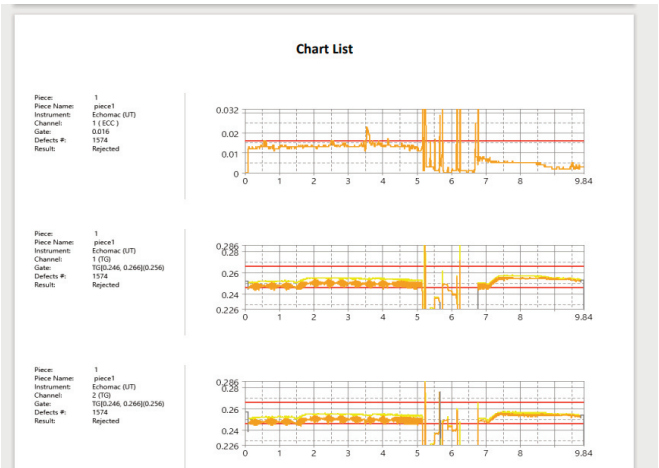
MultiCollector empowers operators with access to crucial test data, enabling better oversight and faster response times on the production floor. By tracking individual bars with unique IDs and testing status updates, the system offers a streamlined approach to monitoring and reporting test results.

<div><div>Magnetic Analysis Corporation</div><div><div>Batch Name: Batch234</div><div>Specification:</div><div>Customer:</div><div>Work Order:</div><div>Method:</div><div>Operator Name:</div><div>Date & Time: Apr 3, 2025 2:34 PM</div><div>Heat #:</div><div>Product Size:</div></div></div>							
PIECE REPORT							
Piece	Date Tested	Length	Status	Echomac Defects	Instrument2 Defects	Instrument3 Defects	Instrument4 Defects
1	Mar 20, 2025 10:31 AM	9.84	Rejected	1574	0	0	0
2	Mar 20, 2025 10:35 AM	9.84	Rejected	1545	0	0	0
3	Mar 20, 2025 10:39 AM	9.84	Rejected	1579	0	0	0
4	Mar 20, 2025 10:46 AM	13.94	Rejected	0	0	0	0


Track each piece via the Piece Report.

Easily Configure and Deliver Tailored Reports to Customers

The user-friendly embedded Report Generator feature offers a flexible interface for configuring reports. Customers can easily select specific data to retrieve and incorporate it into either a provided template or a custom-designed report tailored for their end customer.



Each piece’s test results are collected in one folder.

<div><div>Magnetic Analysis Corporation</div><div><div>Batch Name: Batch234</div><div>Specification:</div><div>Customer:</div><div>Work Order:</div><div>Method:</div><div>Operator Name:</div><div>Date & Time: Apr 3, 2025 2:34 PM</div><div>Heat #:</div><div>Product Size:</div></div></div>									
DEFECT REPORT									
Piece	Instrument	Position	Channel	Gate	Amplitude	Date/Time			
1	Echomac	0.084	1	W	0.244	2025/04/03 03:18:43 PM			
1	Echomac	0.086	1	W	0.238	2025/04/03 03:02:24 PM			
1	Echomac	0.086	1	W	0.238	2025/04/03 03:08:38 PM			
1	Echomac	0.091	1	W	0.238	2025/04/03 03:06:12 PM			
1	Echomac	0.091	1	W	0.238	2025/04/03 03:18:43 PM			
1	Echomac	0.096	1	W	0.238	2025/04/03 03:02:24 PM			
1	Echomac	0.096	1	W	0.238	2025/04/03 03:08:38 PM			
1	Echomac	0.101	1	W	0.238	2025/04/03 03:06:12 PM			
1	Echomac	0.101	1	W	0.238	2025/04/03 03:18:43 PM			
1	Echomac	0.106	1	W	0.238	2025/04/03 03:02:24 PM			
1	Echomac	0.106	1	W	0.238	2025/04/03 03:08:38 PM			
1	Echomac	0.111	1	W	0.238	2025/04/03 03:06:12 PM			
1	Echomac	0.116	1	W	0.238	2025/04/03 03:02:24 PM			
1	Echomac	0.116	1	W	0.239	2025/04/03 03:08:38 PM			
1	Echomac	0.121	1	W	0.238	2025/04/03 10:31:56 AM			
1	Echomac	0.121	1	W	0.238	2025/04/03 03:06:12 PM			
1	Echomac	0.126	1	W	0.238	2025/04/03 03:02:24 PM			
1	Echomac	0.126	1	W	0.238	2025/04/03 03:08:38 PM			
1	Echomac	0.131	1	W	0.239	2025/04/03 10:31:56 AM			
1	Echomac	0.131	1	W	0.238	2025/04/03 03:06:12 PM			
1	Echomac	0.136	1	W	0.239	2025/04/03 03:02:24 PM			
1	Echomac	0.136	1	W	0.239	2025/04/03 03:08:38 PM			
1	Echomac	0.141	1	W	0.239	2025/04/03 10:31:56 AM			
1	Echomac	0.141	1	W	0.239	2025/04/03 03:06:12 PM			

Defect report for individual pieces.

Comprehensive Data Management

Beyond defect detection, MultiCollector ensures full traceability of production information for every piece. Operators can easily retrieve individual piece detailed test data, including defect types, positions, settings, and even operator logs. This transparency not only simplifies reporting but also aids in compliance with industry standards for quality documentation.

Maximizing Production Line Performance

In high-demand production environments, MultiCollector's ability to handle multi-instrument configurations makes it an invaluable tool for companies running multiple lines simultaneously. Whether you're inspecting individual bars or managing an entire weld line, MultiCollector consolidates data across all production lines into one unified database.

Optimized for Weld Line Applications

MultiCollector excels in weld line applications by tracking and integrating test results from different inspection stages. From the initial weld inspection to the final body inspection, all data is consolidated for quick analysis. This ensures that quality issues are identified early in the production process, reducing the risk of costly rework.

Streamlining Workflow for Quality Assurance Teams

The ability to monitor test results in seconds and perform follow-up analysis from any workstation makes it easy to stay on top of production quality. Operators can review past results, perform deep-dive analyses, and ensure that defects are addressed before reaching the customer.

Popular Compatible MAC® Products

MultiMac®
Eddy Current



Production Comparator
Electromagnetic



Echomac®
Ultrasonic

