

# Echomac<sup>®</sup> PA Wheel Tester

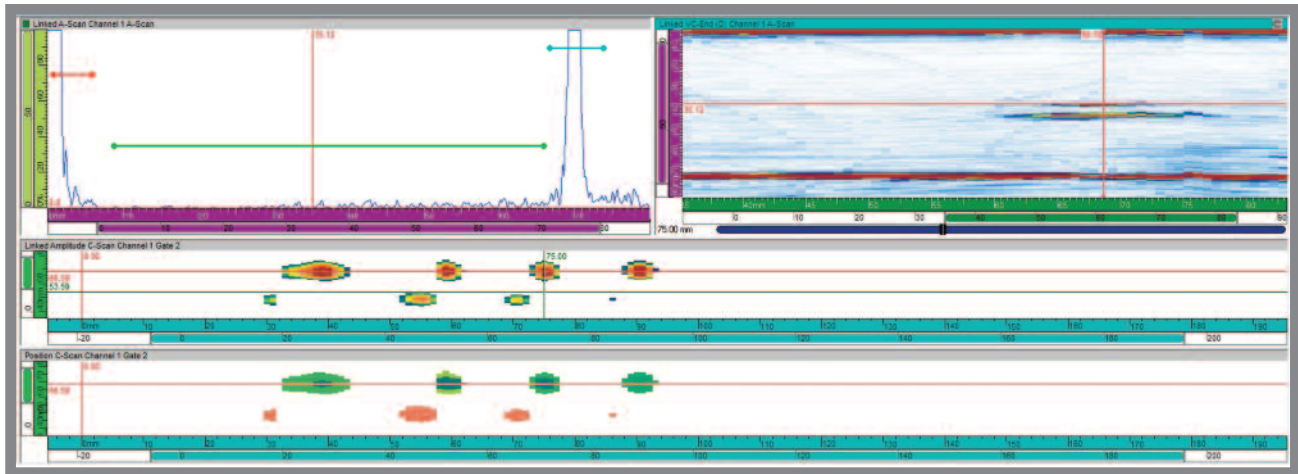
---

Robust, Cost Effective UT Phased Array System for In-Service Rail Wheel Tread Inspection



# Convenient Accurate Inspection of Wheel Treads

MAC's new Echomac® PA Wheel Tester is a cost-effective solution for wheel tread inspection or as a prove up tool for shops using automated inspection systems. The test is conducted with a phased array probe incorporated in a hand held mechanical fixture, designed to ensure stable coupling using "bubbler" immersion techniques. Integrated magnets hold the fixture on the tread and provide easy handling.



Typical Screen Presentation of UT Wheel Tread Test

## Echomac® PA Wheel Tester Features

- ❑ 19" Touch Screen
- ❑ Step by Step screens for the operator
- ❑ Bar Code Entry and auto select setup
- ❑ Alarm for loss of interface, backwall drop, defect detection. (Visual, Audio and On screen)
- ❑ C-Scan imaging of test results (Top View)
- ❑ Position Encoded C-scans to locate defects on the wheel circumference
- ❑ Offline Data Analysis software for Level 3
- ❑ Digital inspection data can be saved per wheel serial number for future reference.
- ❑ 128 element phased array probe, local immersion coupling
- ❑ Meets or exceeds national and international standards like EN13262, ISO5948 or AAR M-107/M-208
- ❑ Rim inspection radial (Tread) Per EN 13262 with defect sizes of 1,2,3 mm FBH and untested depth of 5mm\* while complying with ISO 5948.
- ❑ Compatible with European or US wheel tread geometries
- ❑ Handles Wheel diameters 650 - 1350 mm

*\*Needs to be forged wheel with good surface finishing*

*The new Echomac® PA Wheel Tester is designed and manufactured by Magnetic Analysis Corp., a US based leader in supplying NDT instruments, systems and service for more than 85 years.*

[www.mac-ndt.com](http://www.mac-ndt.com)

Magnetic Analysis Corp.  
103 Fairview Park Drive  
Elmsford NY 10523 USA



Tel: 800-463-8622 ~ 914-530-2000  
Fax: 914-703-3790  
info@mac-ndt.com