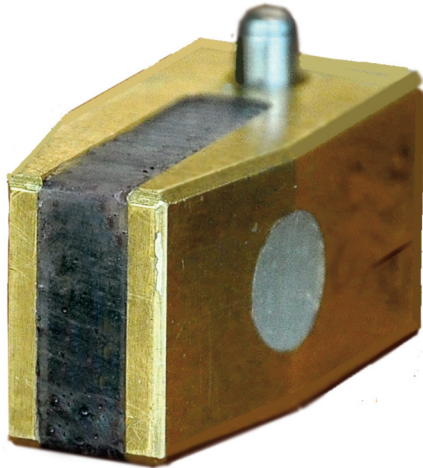
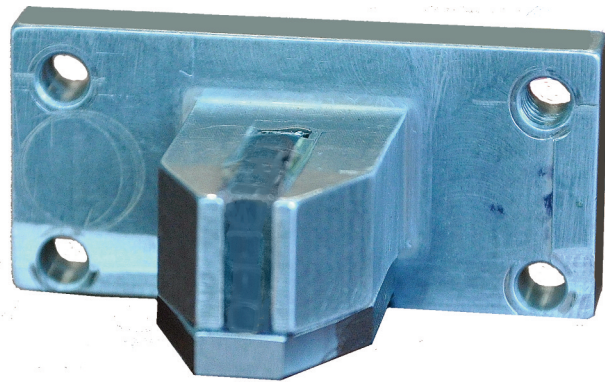


# Eddy Current Z Probes

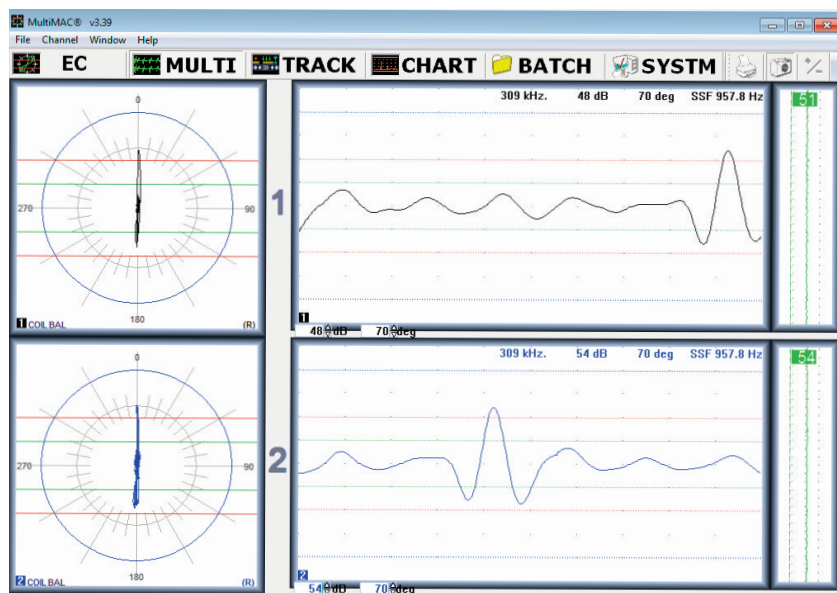
For Testing Non-Magnetic Wire, Rod & Tube



RTC-1003



RTC-1001 Probe Tip  
for use with RTC-1000



Z Probes detecting 0.002" deep notch on 9mm diameter copper tubing

## Z Probe Features:

- Gives superior, more reliable distance compensation for non-magnetic or low conductivity products, as well as magnetic material.
- Improved results on copper, titanium, 18/8 and austenitic stainless steel, including 304 and 302 grades.
- Provides 100% coverage of longitudinal surface defects, with each probe covering a 10mm wide path.
- Improved signal to noise ratio.

## Applications Include:

- High speed production lines of non-magnetic wire, rod and tubes.
- Slightly magnetic austenitic grades such as 304 and 302 that have been cold worked.
- Boiler and condenser tubes for chillers.
- Enhanced inner grooved copper tubes for coil heat exchangers in the air-conditioning and refrigeration industry.
- Ovate wire and material that is randomly out of round.
- Rotomac® HS 20mm with Z probes for small diameter wire, rod and tubes.
- Rotomac® 11R & 12R with Z probes for larger diameter rod, bar and tubes.
- Full upgrade of existing Rotomac® 10R to Rotomac® 11R & 12R with new head plate and Z probes for distance compensation and improved coverage and signal to noise ratio on non-magnetic material.
- Minor upgrade of Rotomac 10R or 9R with replacement headplate to use Z probes for improved results on non-magnetic material, but without distance compensation.

INSTRUMENT	MODEL	PROBE	DISTANCE COMPENSATION	IMPROVED COVERAGE
Rotomac® HS	20mm	RTC-1003	yes	yes
Rotomac® 11R	3C 38mm & larger models	RTC-1000 <i>(Includes Probe Tip 1001)</i>	yes	yes
Rotomac® 12R	40mm	RTC 1001	yes	yes



Magnetic Analysis Corp.

103 Fairview Park Drive, Elmsford, NY 10523 ~ Tel: 914-530-2000 ~ Fax: 914-703-3790 ~ Email: info@mac-ndt.com

[www.mac-ndt.com](http://www.mac-ndt.com)